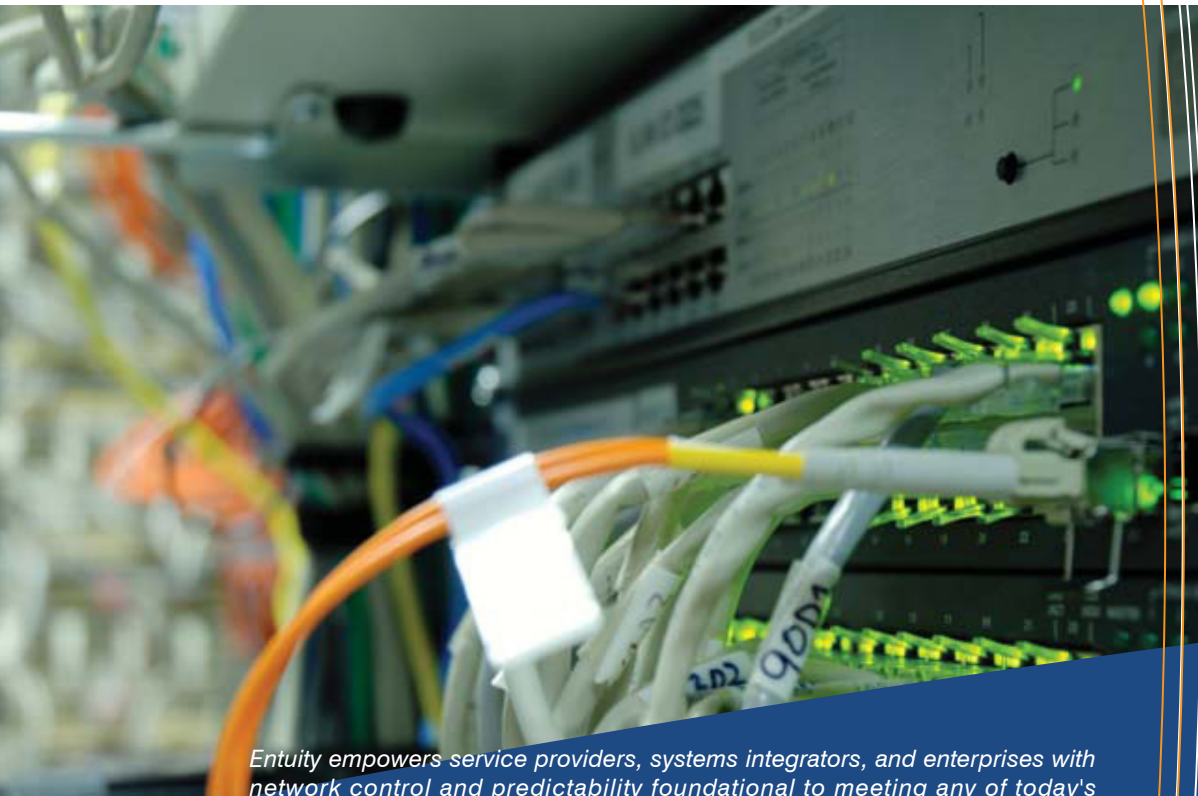




# Entuity<sup>®</sup> 16.0

## Entuity Migration Guide



*Entuity empowers service providers, systems integrators, and enterprises with network control and predictability foundational to meeting any of today's complex IT infrastructure challenges. Entuity provides a succinct suite of the most important functionality for network management – inventory, fault, and performance management – but presented in an easy to use, quick to deploy format.*

#### North America Headquarters

4 Mount Royal Avenue  
Suite 340  
Marlborough, MA 01752  
Tel: +1 508 357 6344  
Fax: +1 508 357 6358

#### EMEA Headquarters

9a Devonshire Square  
London,  
EC2M 4YN  
Tel: +44 (0)20 7444 4800  
Fax: +44 (0)20 7444 4808

Entuity

Entuity

The Entuity product and its related documentation are protected by copyright and distributed under licenses restricting use, copying, distribution and decompilation. Unless you have negotiated with Entuity specific terms and conditions for using its product and associated documentation, such use shall be governed by Entuity's standard licence terms, a copy of which is distributed with the product.

Entuity may make improvements and/or changes to the product(s) and/or program(s) described in this publication at any time. These changes will be incorporated into new editions of the relevant publication.

**Entuity®**, **SurePath®**, **Eye of the Storm®**, **InSight Center®**, **Green IT Perspective™**, **Network Delivery Perspective™** and **Service Delivery Perspective™** are registered trademarks of Entuity. All other trademarks are the property of their respective owners.

License terms and conditions of use for Entuity and included third party software can be found on the Entuity server at [entuity\\_home/licenseTerms/](http://entuity_home/licenseTerms/). A listing of these third party trademarks, references and software included with Entuity is available through its web UI.



# Contents

- 1 Entuity 16.0 Migration Overview**
  - Migration Prerequisites .....5
    - Entuity 16.0 Licenses .....5
    - Entuity 16.0 Multi-Server Environments .....5
    - System Requirements and Shipped Software .....6
      - Changes to Shipped Third Party Software Versions ..... 6
    - Entuity Web UI System Requirements .....7
  - Entuity 16.0 Migration Path .....7
    - Entuity Version and Patch Level.....7
    - Event Project Deployment.....8
    - Migrating to Entuity 16.0 .....8
  
- 2 Entuity 16.0 Migration**
  - Map Migration and mapToView Utility .....9
    - mapToView Overview .....9
    - Convert Maps with User Defined Connections .....10
    - Map Folder Structure .....10
    - mapToView Parameters .....11
    - Convert All of a User’s Maps .....12
    - Convert a Named Map .....12
    - Reassign Ownership of a User’s Maps .....15
    - Convert Shared Maps .....15
  - Physical Connections .....15
  - Entuity Integration for BMC Remedy AR System .....15
  - Power over Ethernet Module Removed .....16
  
- 3 Views and User Access Control Migration**
  - Views Summary .....17
  - View Migration Preparation .....19
  - View Migration Report .....20
    - Migration Status: Shared non-ACL view .....21
    - Migration Status: Special case: duplicated for each user .....22
    - Migration Status: Private non-ACL view .....22
    - Migration Status: Reference view .....22
    - Migration Status: Child of a reference view .....22
    - Migration Status: Some groups with access do not have visibility .....23

Entuity

Migration Status: Ok.....	23
Check Entuity 16.0 View Migration .....	23

# 1 Entuity 16.0 Migration Overview

This migration guide covers issues for users migrating from earlier versions of the Entuity software to Entuity 16.0 GA (General Availability).



---

Before you upgrade to Entuity 16.0 you are strongly recommended to back up your current installation; the Entuity 16.0 upgrade process does not include a rollback facility.

---

## Migration Prerequisites

Before installing Entuity 16.0 you should read its accompanying:

- *Known Issues* note which details open Issues and resolutions.
- *Release Notes* which identifies for you new, changed and removed functionality.

This Migration Guide, the Known Issues note and the Release Notes are all available from the [Entuity Customer Portal](#). If you require login credentials for the Customer Portal please contact your Entuity representative for assistance.

You can find detailed install and configure instructions in the *Entuity Getting Started Guide*. The *Getting Started Guide* and *Release Notes* are available at the root of the supplied Entuity installation DVD or ISO image.

When migrating from Entuity 15.0 or earlier you should also read the *Release Notes* and *Migration Guide* of intermediate releases, for example Entuity 15.5.

## Entuity 16.0 Licenses

You must obtain from your Entuity representative an Entuity 16.0 license; licenses valid with earlier versions of Entuity are not valid with Entuity 16.0.

## Entuity 16.0 Multi-Server Environments

Entuity does not prevent you using different versions of Entuity to manage your network, and where these servers run independently of each other, or you directly log onto them, you can continue to use them without issue.

If during the migration process you have a consolidation server running a different version of Entuity to one or more of its remote servers then you may not be able to access data on those specific remote servers through the consolidation server. The implementation of views in Entuity 16.0 is incompatible with the view implementation used with Entuity 15.0 and earlier. The servers themselves can be accessed directly and do continue, for example, to collect data. When both consolidation and remote servers are upgraded to Entuity 16.0 then the remote servers would again be accessible through the consolidation server.



If you require further guidance on migrating multiple Entuity servers to Entuity 16.0 please contact your Entuity Support representative.

## System Requirements and Shipped Software

Entuity 16.0 server is only certified for use with the 64-bit English edition variants of:

- Red Hat Enterprise Linux ES version 6
- Oracle Linux 6
- Windows Server 2008 R2
- Windows Server 2008 SP2
- Windows Server 2012
- Windows Server 2012 R2.

*Table 1 Minimum Server Specifications* provides a by component breakdown of the minimum requirements for each of the device-port management bands:

- High, 1000 devices and 70000 ports.
- Intermediate, 800 devices and 50000 ports.
- Low, 400 devices and 25000 ports.

There is no change from Entuity 15.5 to Entuity 16.0.

Server Component	Low	Intermediate	High
Minimum CPU Clock Speed	2.5 GHz	2.5 GHz	2.5 GHz
Intel Processor Family (or equivalent)	Xeon E3 Family	Xeon 5000 Sequence	Xeon E5 Family
Minimum No Cores	4	6	12
Windows Minimum Physical Memory	6 GB	12 GB	24 GB
Linux Minimum Physical Memory	8 GB	16 GB	32 GB
Disk Capacity	60 GB	90 GB	120 GB

Table 1 Minimum Server Specifications

## Changes to Shipped Third Party Software Versions

Product	Entuity 15.5 GA	Entuity 16.0
Apache Tomcat	7.0.62	7.0.65
Apache HTTPD	2.4.12	2.4.17
JRE	1.8.0_45	1.8.0_65

Table 2 Third Party Software Versions

Product	Entuity 15.5 GA	Entuity 16.0
MariaDB Server	10.0.16	10.0.22
MariaDB Library (libmariadb)	2.1.0	2.2.0
MariaDB Java Client	1.1.8	1.2.3
OpenSSL	1.0.2a	1.0.2d

Table 2 Third Party Software Versions

## Entuity Web UI System Requirements

The Entuity web UI is certified for use with:

- Internet Explorer 10.0 or later
- Firefox 38 ESR (Extended Support Release) or later
- Google Chrome 46 or later releases.

Users must enable their web browsers for both JavaScript, for example to allow the working of the Entuity menu structure, and cookies, for example to maintain their login status.

The greatest call on the resources of a client machine is the map. An Entuity map is drawn on the client machine, the more objects you have in the map the greater the resource required to render it. To use maps with 500 or more objects the client machine should have:

- 8GB or more of memory.
- The equivalent, or better, of an Intel 4 Cores i5 2.8 GHz processor.

## Entuity 16.0 Migration Path

The certified migration paths to Entuity 16.0 are from:

- Entuity 15.0 Patch 3
- Entuity 15.5 Patch 1.

You can check the Entuity Support site for the latest patches.




---

If you are upgrading to Entuity 16.0 from a version of Entuity or patch level that is different to the certified migration path please contact Entuity Support for guidance.

---

### Entuity Version and Patch Level

To check the current version and patch level of an Entuity server:

- 1) From the Entuity server click **Help > About Entuity**.

Entuity displays server details, including release version and patch details, for example:

```
Entuity 15.5 Patch (P01)
```

To install a patch to an Entuity server:

- 1) From the Entuity customer support site download the patch file to a temporary location.
- 2) Stop the Entuity server and take a backup.
- 3) Apply the patch using the patch installer, `entuity_home\install\installPatch`, for example:  

```
installPatch c:\temp\ENTUITY_15.5.P01.WinNT.patch
```
- 4) After installing the patch run `configure`. The patch is only applied once `configure` successfully completes.
- 5) Restart the Entuity server.

## Event Project Deployment

Entuity 16.0 has an updated Event Management System (EMS) event project, that for example includes:

- A new ServiceNow SNMP Trap Send action.
- Configuration Management events and incidents.

When you upgrade Entuity the new event project is available but it is only applied to the installation when it is deployed.

If you have customized your current event project then use the Merge tool that is available from the EMS Project History page. It identifies differences between two selected projects. You can then choose how to resolve conflicts between the two. On completion it creates a new event project ready for deployment (the two source projects are not changed).

## Migrating to Entuity 16.0

Installing Entuity 16.0 is the same process whether migrating from Entuity 15.5 Patch 1 or an earlier supported version of Entuity. When migrating from Entuity 15.0 Patch 3 you only need to install Entuity 16.0; you do not first install Entuity 15.5. Ensure you:

- Are migrating a server on the migration path. (See *Entuity Version and Patch Level*.)
- Read *Chapter 2 - Entuity 16.0 Migration*.
- Read *Chapter 3 - Views and User Access Control Migration* if migrating from Entuity 15.0 or earlier.
- Have an Entuity 16.0 license.

To migrate to Entuity 16.0:

- 1) Stop the Entuity server and take a backup.
- 2) Run `install` to install Entuity 16.0. You should add the new license before running `configure` (by default the license is installed to `entuity_home\etc`).
- 3) Run `configure`. After `install` completes you are prompted to continue with the installation process.
- 4) Restart the Entuity server.
- 5) Deploy the updated event project or apply the changes within it to your current project.



## 2 Entuity 16.0 Migration

This section details areas of Entuity 16.0 where there are changes in its behavior:

- Map Migration and mapToView Utility
- Physical Connections
- Entuity Integration for BMC Remedy AR System
- Power over Ethernet Module Removed.

### Map Migration and mapToView Utility

Maps in Entuity 16.0 are representation of views. Users must therefore consider which of their current maps they want to create in Entuity 16.0 as views.

After migrating to Entuity 16.0 users can use the `mapToView` utility to convert old maps into views. Users will be able to create a view for a selected map along with any sub-views to match the map's old hierarchy. This method will keep the map's X and Y co-ordinates and any background image and drill downs. Custom links will be removed.

#### mapToView Overview

`mapToView` creates a view and map definition for each specified map saved on the current server. If a map contains components that are managed by remote Entuity servers it will also create views on those remote servers (when using a valid user account with the Create Views permission).



---

When migrating maps on a central Entuity sever that include objects managed by remote Entuity servers then the central and remote servers should be running Entuity 16.0.

---

You can control:

- Which maps are converted by specifying the owner of the map and specifying either the name of a map or all of that user's maps.  
Public maps do not have an owner but can be converted in a similar way.
- The owner of the new view. The view owner must have the Create View permission.



---

After the view is created the view owner or a member of the administrator user group can, through the web UI, setup user group access.

---

If a map included:

- A drill-down (i.e. a group) to another map then `mapToView` would create a sub-view that included the objects in that grouping.
- Entuity servers they are not included in the converted map. Entuity 16.0 maps do not represent the Entuity server.



- Hypervisors then the associated VM Platforms are migrated to the view. A VM Platform and all of its hypervisor are included to the map.

---

Hypervisors may be dragged into maps. They do not appear in the navigation tree but are listed in the View Summary and can be first dragged into Drop Box before dragging into a map.

---

- Components from remote Entuity servers then `mapToView` will also create views on those remote servers.

You should ensure the server on which you are running `mapToView` has access to those remote servers and that the user account to which you are assigning view ownership exists on all of the remote servers with the appropriate Create Views permission level.

### Convert Maps with User Defined Connections

User Defined Connections are usually migrated to the new map. `mapToView` converts User Defined Connections to physical connections, connecting endpoints at the port or when that is not available at the device level.

`mapToView` does not convert User Defined Connections that include a group as an endpoint on the link. However in Entuity 16.0 maps do represent links between sub-views (i.e. between objects in the sub-views) and between a sub-view and an object on the map and if that were the purpose of the User Defined Link it may appear as though the link was migrated.

### Map Folder Structure

Pre-Entuity 16.0 maps were saved to sub-folders of `entuity_home\maps`. Entuity derived the name of the sub-folder from the username of the map owner. Public maps did not have an owner and instead were saved to the `Shared` folder.

Maps and the map folder structure are migrated to Entuity 16.0 so that they are available for conversion to the new map implementation (they are not used by Entuity 16.0). When you run `mapToView` you must specify the owner of the map as it:

- Identifies the folder in which the map, or maps, to be converted reside.  
Public maps were saved to the Shared folder and are specified through a separate parameter.
- May determine the owner of the migrated view (there is an option to specify a different owner). The owner of the view must have the appropriate Create View permission level for `mapToView` to create the view and map.

Users cannot globally convert all maps unless they write their own script from which to call `mapToView`.

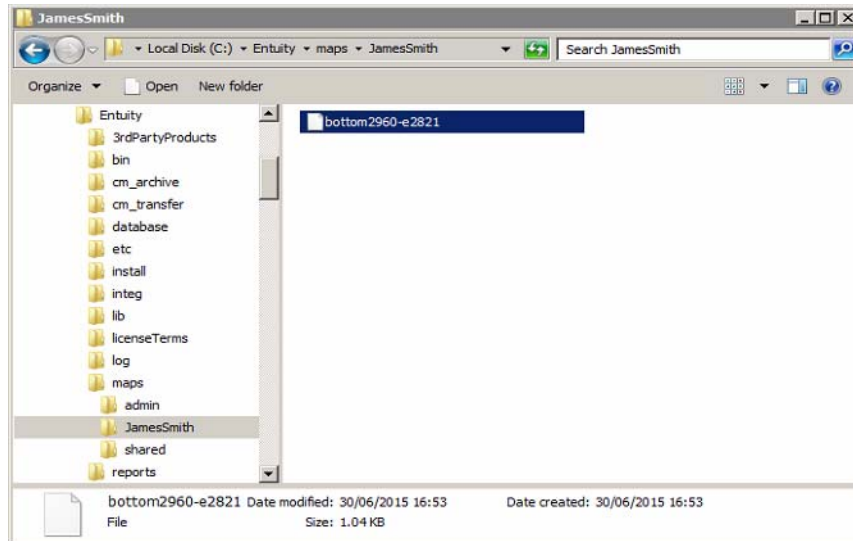


Figure 1 Maps Folder Structure

## mapToView Parameters

The conversion utility `mapToView` is located in the `/install` directory of the Entuity server, for example `entuity_home/install`.

To view the command line help run `mapToView` without any parameters:

```
maptoview
Usage: mapToView [OPTION].. [map]..
```

Parameters		Description
-h	--help	Outputs to the command line a listing and brief description of the <code>mapToView</code> parameters.
-u	--user	Converts map(s) owned by the user. If a user account name includes spaces then enclose that name in double quotes, e.g. "James Smith".
-c	--createAs	The username of the Entuity user assigned ownership of the converted map. This user account must be a member of the Administrator user group or have the Create Views tool permission.
-p	--password	Password of the Entuity user assigned ownership of the converted map. A password is only required if you are using LDAP to manage user accounts.
-s	--shared	Parameter used to identify maps that were shared, set to Public. They do not have an owner.

Table 3 mapToView Parameters

Parameters		Description
-a	--all	Convert all maps owned by the specified owner (--user) or are public (--shared).
-v	--verbose	Sends to the command line progress messages on map conversion.

Table 3 mapToView Parameters

## Convert All of a User's Maps

To convert all maps on the Entuity server that belong to one user and have that user retain ownership of the map (and view) you must specify the user account and password. For example to convert all admin's maps enter:

```
mapToView -u admin -p admin -a
```

If the maps saved to a server contain content from multiple servers then you should run mapToView:

- When the remote servers are available.
- And ensure the user account has the appropriate permission level on all servers. mapToView would create views and sub-views on the remote servers.

## Convert a Named Map

This example uses a map

- Created in Entuity 15.5.
- Named **global user defined connections added**.
- Created by the user **admin**.
- Which includes groups, Cloud\_Close and Cloud\_Far that are connected to each other and c3560 using user defined links. User defined links are not migrated to Entuity 16.0 however these user defined links represent the connections that are available to the devices within the two groups.

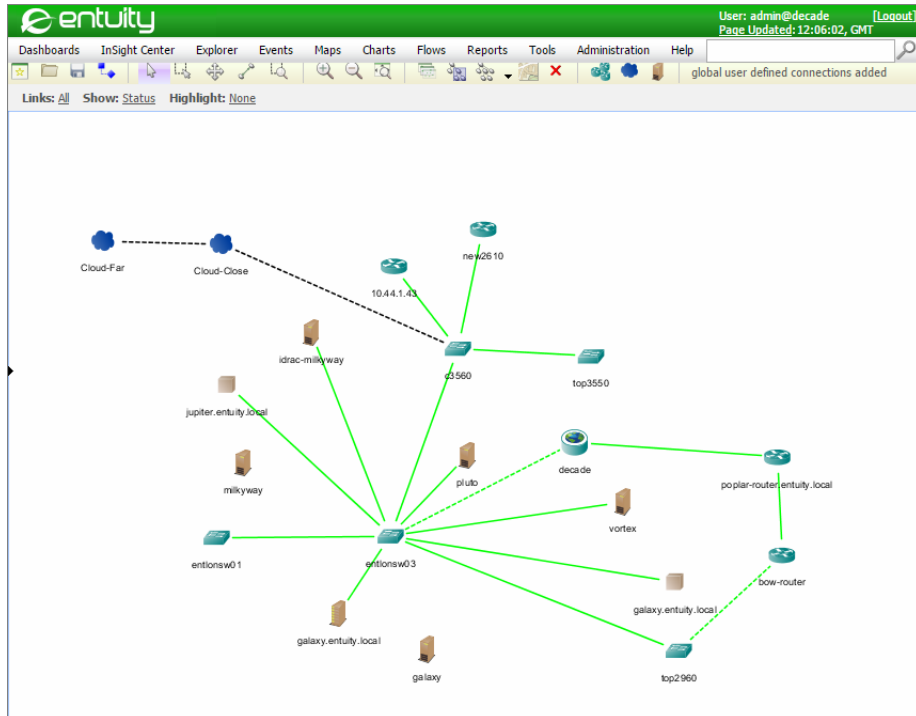


Figure 2 An Entuity 15.5 Map

To migrate a specific map to Entuity 16.0:

From the updated Entuity 16.0 server:

1) Navigate to `entuity_home\install` and enter:

```
mapToView -u admin -p admin "global user defined connections added"
```

`mapToView` reports the progress of the view generation. `mapToView` creates views and sub-views on all of the connected servers to which the owner of the new map currently has access and the permission to create a view.

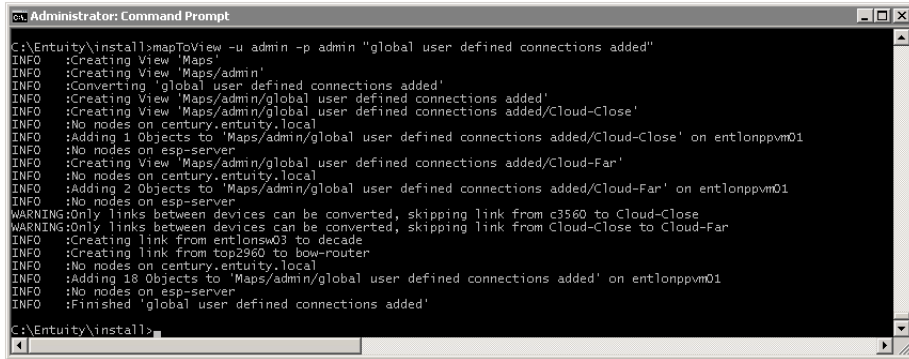


Figure 3 Map with User Defined Connections

2) Login into the Entuity server and view the newly created view.

mapToView creates the Cloud\_Close and Cloud\_Far sub-views. The map shows links between these sub-views because the devices within the views have connecting links.

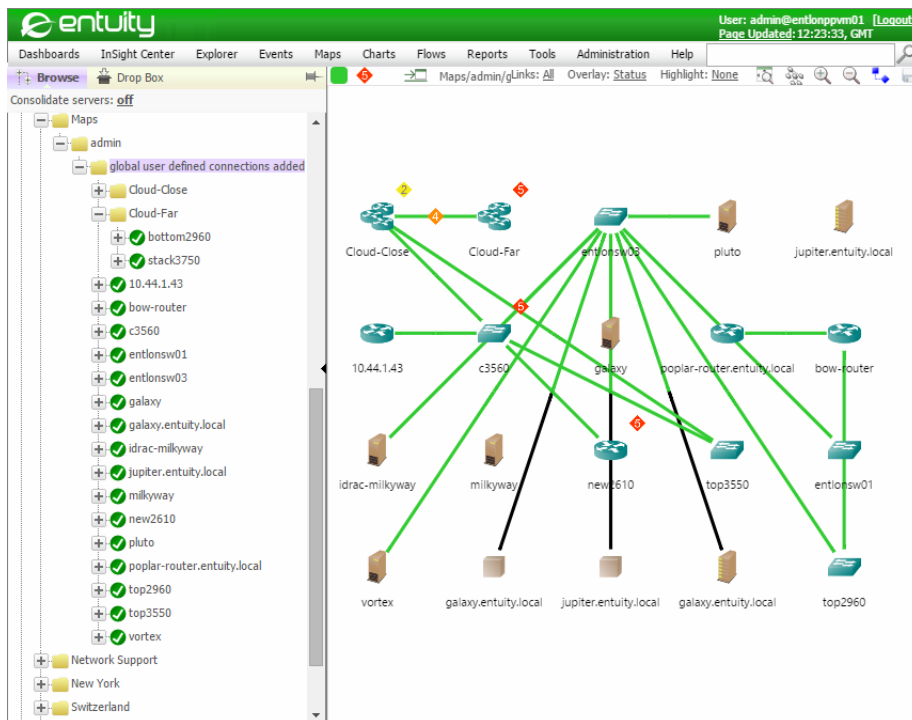


Figure 4 Imported Map and View

## Reassign Ownership of a User's Maps

You can set ownership of the converted maps (views) to a different user to that who originally owned the map. For example to assign all of RiLee's maps to NanaToure enter:

```
mapToView -c NanaToure -p password -u RiLee -a
```

The password is for NanaToure's user account, as NanaToure's account is used to create the view.

## Convert Shared Maps

mapToView does not assign user groups to views. When converting Shared maps assign an administrator as the owner and then - as with all other converted views - through the Entuity web UI assign user group access. This example assigns to JamesSmith ownership of all views converted from Public maps:

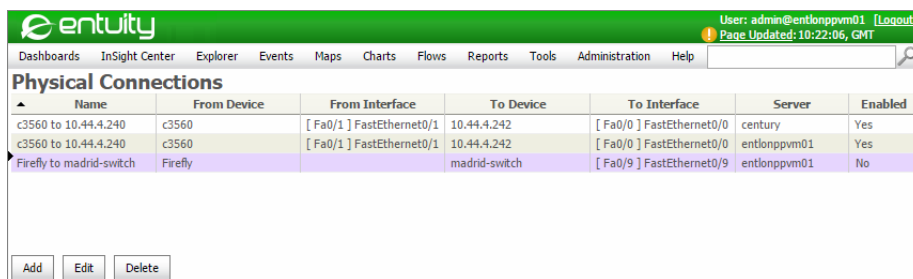
```
mapToView -c JamesSmith -p password -s -a
```

## Physical Connections

In Entuity 16.0 the option to disable physical connections is removed. Entuity will migrate physical connections that are disabled and will maintain their disabled status. If you edit those connections then they are automatically enabled and you cannot subsequently disable them.

You can check the current status of a connection through the Physical Connections page:

- 1) Click **Administration > Inventory/Topology > Physical Connections**.
- 2) Position the mouse over the column titles and from the context menu click Configure Columns.
- 3) Move Enabled to the Show column and click OK.



The screenshot shows the Entuity web interface. The top navigation bar includes 'Dashboards', 'InSight Center', 'Explorer', 'Events', 'Maps', 'Charts', 'Flows', 'Reports', 'Tools', 'Administration', and 'Help'. The user is identified as 'admin@entlonppvm01' and the page is updated at '10:22:06, GMT'. The main content area is titled 'Physical Connections' and displays a table with the following columns: Name, From Device, From Interface, To Device, To Interface, Server, and Enabled. The table contains three rows of data, with the third row highlighted in purple. Below the table are 'Add', 'Edit', and 'Delete' buttons.

Name	From Device	From Interface	To Device	To Interface	Server	Enabled
c3560 to 10.44.4.240	c3560	[ Fa0/1 ] FastEthernet0/1	10.44.4.242	[ Fa0/0 ] FastEthernet0/0	century	Yes
c3560 to 10.44.4.240	c3560	[ Fa0/1 ] FastEthernet0/1	10.44.4.242	[ Fa0/0 ] FastEthernet0/0	entlonppvm01	Yes
Firefly to madrid-switch	Firefly		madrid-switch	[ Fa0/9 ] FastEthernet0/9	entlonppvm01	No

Figure 5 View Migrated Disabled Connections

## Entuity Integration for BMC Remedy AR System

When Entuity 16.0 is installed to machines running the Linux operating system the Entuity Integration for BMC Remedy AR System uses a 64-bit version of `arforward`. Entuity also include a 32-bit version, `arforward_32`. If you want to use the 32-bit version then you must

rename it to `arforward`. Both versions of `arforward` are found in `entuity_home/integ/Remedy/`.

In Entuity 16.0 Windows installations continue to use a 32-bit version of `arforward`.

## Power over Ethernet Module Removed

In Entuity 16.0 the Power over Ethernet (PoE) module is removed.

This includes the removal of:

- PoE module option from `configure`.
- The PoE and VLAN by Port and Device Report.
- Support for Ethernet Switch PoE and therefore after migration the loss of the per port PoE metrics. If you require more information please contact Entuity Support.

Support for PoE Midspan Injectors is retained and is now included to Entuity by default.



## 3 Views and User Access Control Migration



---

Entuity 15.5 included a major enhancement to views. If you are upgrading from Entuity 15.0 or earlier you must read the following sections on view migration. If you are migrating from Entuity 15.5 then you are already using the new view mechanism, do not have to prepare for view migration and can safely ignore this chapter.

---

Entuity 15.5 included a major enhancement of views, with the content of a view being the same for all users accessing it, with new mechanisms for building views and controlling user access to those views, updated view tool permissions and new view reports.

The upgrade process automatically migrates your current view structure, and user access to content in those views, to the new view structure. Before upgrading to Entuity 16.0 users are strongly advised to:

- Consult this section to understand and prepare for view migration.
- Review how you are currently using Entuity views and access permissions. The more you have used ACL and Non-ACL views to control user access to content the more carefully you will have to consider how to prepare your current server before migrating to Entuity 16.0.
- Ensure your current Entuity server is patched to the correct level.  
A correctly patched server will include the View Migration report which is an important tool in preparing your current install for migration to Entuity 16.0.
- Run through the migration in a test environment.
- Always take a full backup before migrating to Entuity 16.0.
- Contact your Entuity Support representative if you have any questions about, or require guidance on, the migration process.

### Views Summary

The key changes to views introduced in Entuity 15.5 are:

- All views now act as Access Control List (ACL) views, non-ACL views are not supported and will be converted to ACL views during the migration process, therefore
  - Different users accessing the same view will always see the same objects, whereas previously visible view content would potentially have varied according to their Access Control List setup.
  - The distinction between the two view types and the terminology are dropped. The padlock icon now represents a view that the current user cannot edit.
- Reference views are not available in Entuity 16.0. The new base view facility can deliver similar functionality.  
A reference view was really a different path to the same view. For example if view1 had the sub-view2 and viewA was then assigned a sub-view that was a reference to

sub-view2, you had not increased the number of views on your server. Instead there were now two paths to the same sub-view, **view1 > sub-view2** and **viewA > sub-view2**.

- The option to make a view Visible or Not Visible to a user group is removed. Previously an administrator may have assigned views to a user, so they had access to objects in those views, but not made the views themselves visible.

On migration these Not Visible views are made visible.

- A new All Objects view:
  - Is a system view with the owner **system**.
  - Contains all objects under management of the Entuity server.
  - By default can only be accessed by members of the administrators user group. Administrators can assign access and edit permissions to other user groups. Those non administrator users with edit permission to the All Objects view can only edit it, i.e. assign access to other user groups, if they have the Share View permission.
  - Contains all services under management of the Entuity server.
  - Is always displayed at the top of the Explorer tree and at the top of any other listing of views in Entuity.
  - Has the internal view id of 1, which was previously the My Network view id. If you have used this id, for example when specifying Flex Reports or when forwarding events and incidents then you may see a change in behavior depending upon the permissions of the associated user account. When used with a user that is a member of the administrators user group there will be no change in behavior however when used with non-administrators the view would now include all objects whereas previously it would only have included objects to which the user had access.
- A revised implementation of the My Network view, where each user has their own My Network view:
  - With their username appended to it and enclosed in brackets, e.g. My Network (jamesmith), My Network (nanatoure).
  - That contains all objects that a user can view. It does not determine what a user can view, i.e. it is a union of all other views associated to the user and therefore its content is not directly editable.
  - That is sorted towards the top of any view listing in Entuity but below the All Objects view. If an administrator is viewing all private views then My Network views are sorted alphabetically.
  - That is now a Private view. It is only accessible to that user (and system administrators if they set their user preference to show private views).
  - Which cannot be used as a base view because the contents of a My Network view can change dynamically and would create cyclic dependencies since a user's My Network view is calculated by making every other view of that user a base view for it.
- New concept of base views. A base view is one on which another view is based. All views apart from My Network views can act as a base view, however Entuity will prevent circular dependencies.

- A view can be based on more than one view and users can select whether the content of the new view is derived from the union or intersection of objects in the selected views:
  - Union, results in a view that contains all of the objects in the selected views.
  - Intersection, results in a view that contains only the objects that are in all of the selected views.

If you alter the contents of a base view or remove a view from a union/intersection definition this alters the resultant view. Entuity does warn when deleting a view that it may impact other views, it does not warn if you edit a view.

- A user's default view is now a user preference setting. Factory default is the user's My Network view.
- A user with access to a Parent view can now access all of the Child views implicitly, whether they have explicitly been given access or not.
- A user with access to a Child view will now see the Parent view in the Explorer tree, but depending upon their permissions may not see content in that view. These parent views allow users to navigate to the child view to which they do have access.
- When Explorer is in Consolidation mode a new All Servers icon in the tree:
  - Indicates servers' views are consolidated.
  - Provides a base from which to create new top level views and to move or copy existing sub-views back to the top level (when in consolidated mode).
  - Provides a method for clearing the current selection (which is why it is available when there is only a single server) which is not otherwise easy to do, but sometimes desirable.
  - Removes the requirement for the **Create new top level view** icon, so it is removed.
- Green It Perspective used the My Network view, which varied depending upon the user running the perspective. In Entuity 16.0 the Green IT Perspective uses the All Objects view and is therefore consistent for all users.

## View Migration Preparation

Entuity 15.5 introduced major changes to how views operate and how user access to objects in those views is controlled. Before attempting to upgrade to Entuity 16.0 you should always run the View Migration report which will identify the migration status of every view on a server. However you can expect that where you configured view and user access control by:

- Only using ACL views, or assigned all users access to all managed objects, then automatic view migration would result in users having the same access permissions after migration as before migration.
- Using hidden ACL views to assign access permissions to users and using non-ACL views for users to access managed objects then after migration:
  - All Non-ACL views would have been converted to ACL views.
  - All previously hidden ACL views would be visible.

Users that previously might only have had access to a subset of objects in shared Non-ACL views would now have access to all objects in those views (the objects in the migrated view being determined by the permissions of the view owner).

Reference views create alternative view paths to the same view. Reference views are not supported in Entuity 16.0 so the Entuity 16.0 migration:

- Converts each reference view to a sub-view that uses the original referenced view as its base to determine its contents. Changes in the base view therefore automatically appear in the new migrated view.
- Does not migrate sub-views of the referenced view. If you require the same view hierarchy then before you migrate to Entuity 16.0 create a copy of the referenced view and its view hierarchy.

## View Migration Report

You run the View Migration report on your current Entuity installation to check its view setup for issues that may cause the migrated view and user access control setup to behave significantly differently than before. The report comprises of:

- A first page that details the type of checks made and suggested potential actions for each state.
- Subsequent pages that report the results of those checks against each view on the server.

To run the View Migration report:

- 1) Click **Reports**.
- 2) Click **Administrative Reports**. Entuity displays the list of available reports.
- 3) Click **View Migration**.
- 4) Select the *Output Format*, e.g. **HTML**, and then click **Run**.

## Entuity Report View Migration



Server	View	ACL	Reference	User Groups	Migration Status
ENTLONPPVM01	shared non-acl view	No	No	entuity	✘ Shared non-ACL view
ENTLONPPVM01	Europe/New York REF	Yes	Yes		⚠ Reference view
ENTLONPPVM01	Europe/New York REF/Brooklyn	Yes	No		⚠ Child of a reference view
ENTLONPPVM01	My Network	No	No		⚠ Special case: duplicated for each user Private non-ACL view
ENTLONPPVM01	private non acl view	No	No		⚠ Private non-ACL view
ENTLONPPVM01	restricted access view/not so restricted	Yes	No	entuity	⚠ Some groups with access do not have visibility
ENTLONPPVM01	All Objects	Yes	No		✔ Ok
ENTLONPPVM01	All Objects/Regional Copy	Yes	No		✔ Ok
ENTLONPPVM01	Europe	Yes	No		✔ Ok
ENTLONPPVM01	Europe/Berlin	Yes	No		✔ Ok
ENTLONPPVM01	Europe/London	Yes	No		✔ Ok
ENTLONPPVM01	New York	Yes	No		✔ Ok
ENTLONPPVM01	New York/Brooklyn	Yes	No		✔ Ok
ENTLONPPVM01	Regional	Yes	No	All Users	✔ Ok
ENTLONPPVM01	Regional Infrastructure	Yes	No	All Users	✔ Ok
ENTLONPPVM01	restricted access view	Yes	No		✔ Ok

Figure 6 View Migration Report

The Migration Status of each view indicates the type of issue discovered, you can refer to the first page of the report (or the following sections) for suggested actions to resolve each issue. You can:

- Run the report as often as is required.
- Access the generated reports after upgrade to Entuity 16.0 through the server file structure.
- Not run the report after migrating to Entuity 16.0, however Entuity 16.0 does include a report for you to check your view and user access control setup, the View Permissions and User Access Control report.

### Migration Status: Shared non-ACL view

A shared non-ACL view would show different content according to the access permissions of the user. After migration to Entuity 16.0 all users with access to the view would now have access to all objects in that view; the content of a shared non-ACL view after migration will depend upon the owner of that view. If this is acceptable then no action is required. If this is not acceptable then before you upgrade you can:

- Delete the view.
- Remove access to all non-administrator groups.

- Modify the view contents to only contain those objects that you wish to grant access to.

### Migration Status: Special case: duplicated for each user

Pre Entuity 15.5 each server has one My Network view, although the objects a user can access is dependent upon their access permissions. In Entuity 16.0 each user has their own My Network view that only contains the managed objects for which they have permission to access.

Report schedules that run against the My Network view will be migrated to the My Network view of the user that created the schedule. If you do not want the report schedules to run against a user's private My Network view you should do one of the following:

- Edit the report schedule and change the view it runs against.
- Delete the report schedule.
- Suspend the report schedule and decide what action to take after upgrading.

### Migration Status: Private non-ACL view

These views are only accessible by their owner and members of the administrators group. They will be converted to have the same content as their owner currently sees in them. If this is not acceptable then you may wish to do one of the following prior to upgrade:

- Delete the view.
- Change the view to be an ACL view. This will give the owner access to all objects within it.

### Migration Status: Reference view

Reference views create alternative view paths to a view. Reference views are not supported in Entuity 16.0. Entuity 16.0:

- Migrates each reference view to a sub-view that uses the original referenced view as its base to determine its contents. Changes in the base view therefore automatically appear in the new migrated view.
- Does not migrate sub-views of the referenced view. If you require the same view hierarchy then before you migrate to Entuity 16.0 create a copy of the referenced view and its view hierarchy.

### Migration Status: Child of a reference view

Entuity 16.0 view migration only migrates top-level reference views, it does not migrate any sub-views of a reference view. These views are still available but only through the original (referenced) view path.

Where the child of a reference view is used, for example in report schedules, then the schedule will remain assigned to that view but the view path will be amended from that using the reference view to that using the original view.

If you wish to maintain the hierarchy that currently exists under a reference view you will need to create a copy of the referenced view instead of a reference to it.

### Migration Status: Some groups with access do not have visibility

This is an ACL view where one or more of the user groups that have read access to it do not have visibility on the view itself. This means members of those groups have access to the contents of this view, but will not see this view in their view hierarchy. The ability to have read access but no visibility is not supported in Entuity 16.0.

After migration some users may see this view in their view hierarchy when they did not see it before. If this is not acceptable then you can do one of the following prior to upgrade:

- Delete the view.
- Change the user groups that have access to the view.
- Change the users that are members of the user groups that have access to the view.

After upgrading to Entuity 16.0 through their preferences settings users can choose to hide any combination of views they want to.

### Migration Status: Ok

View will migrate without significant change of functionality. No action is required prior to upgrade.

## Check Entuity 16.0 View Migration

When migrating from a pre Entuity 15.5 installation then on running Entuity 16.0 `install` users are warned that the view implementation is revised in Entuity 16.0 and reminded again to consult this migration guide.

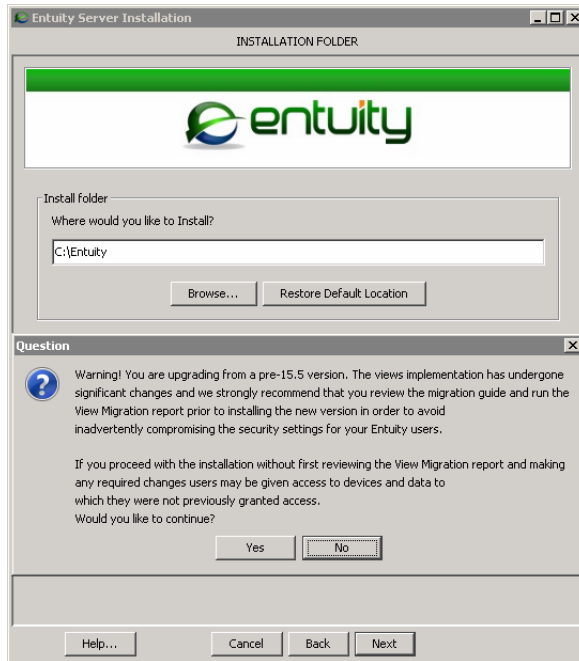


Figure 7 Install Migration Warning

After migrating to Entuity 16.0 you can run the View Permissions and User Access Control report to verify the view and user access control permissions have been migrated as you expected. You can run the report against one or more Entuity servers. The report comprises of a series of optional tables that detail user and user group access to views and devices that you can select to include to the report:

- **Show group membership**, includes to the report a table that lists for each user, by Entuity server, the user groups of which they are members.
- **Show group view access**, includes to the report a table that lists for each view, by Entuity server, the devices available through that view.
- **Show device user access membership**, includes to the report a table that lists for each device, by Entuity server, the users that have access.
- **Show device access membership**, includes to the report a table that lists for each device, by Entuity server, the users that have access.
- **Show user's tool permissions**, includes to the report a table that lists for each user group, by Entuity server, the tools to which they have access.

To run the View Permissions and User Access Control report:

- 1) Click **Reports**.
- 2) Click **Administrative Reports**. Entuity displays the list of available reports.
- 3) Click **View Permissions and User Access Control**.



- 4) Set the report options and run the report.