



# Entuity® v19.0 Release Notification

April 22nd 2021



# Entuity v19.0 Release Notification

## Technical Bulletin April 22, 2021

We are delighted to announce that the latest version of **Entuity**, to be known as **Entuity v19.0**, is now available for customer use. Details of the benefits to be gained from this new release are set out below.

## Entuity v19.0 New Release Details

The following key additions and changes have been made to Entuity v19.0:

- Asset management
- Support for server assets
- Support for storage devices
- Asset credential management
- Licensing
- Reporting styles

# Asset management

Replacement of Device Inventory page with a new Asset Management interface to provide more extensive and intuitive management of and insight into the process of discovering and managing assets on the network.

- New Asset Management page to summarise asset, license and credential information across all servers and specify details on individual servers.
- Managed Assets page replaces the existing Device Inventory page. From here, users can keep track of all managed assets and choose how to manage assets as appropriate.
- New Associated Assets page detailing the virtual machines, Meraki devices, Viptela devices and wireless APs that are discovered as associated assets to cloud controllers and VM platforms.
- New Discovered Assets page collates the latest asset discovery results of each auto discovery profile so that users can review new and unmanaged assets and determine asset management workflows.
- Updated Auto Discovery page allows users to create and manage discovery profiles, their progress and view their results.

Server: helix.entuity.local

Managed Assets | 12 Discovered Assets | Auto Discovery

**Asset Management** | Add Assets | Modify Asset | Delete Asset | Filter Table

**License Consumption**

Full:	24/200
Basic:	3/200
Associated:	97/200
Config Mgmt:	10/50

**Asset Management Levels**

Failed/Pending	6
Full	6
Basic (Ping Only)	2
Full (All Ports)	22
Basic (SNMP)	1

37

Status	Asset Name	IP Address	Type	Vendor	Model	Serial No	Location	Views	Config Mgmt	Managed Si...	Mgmt Level	Associated ...
!	bottom2960	10.44.1.41	Basic SNMP				Server Roo...			14:06, 30 M...	Basic (SNM...	
!	bullderm	10.44.1.164	VMware vC...					UK/London ...		10:58, 30 M...	Full	
!	typhoon	10.44.4.226	VMware vC...					UK/Notting...		10:58, 30 M...	Full	
!	vortex	10.44.1.119	VMware vC...					UK/Notting...		10:59, 30 M...	Full	
✓	aruba6000	10.66.100.1...	Wireless Co...	Aruba Netw...	A6000-US	F00075713	MDF-B			14:06, 30 M...	Full	97 ( 0 new )
✓	asa5510-1	10.44.5.18	Ping Only					UK/London ...		11:00, 30 M...	Basic (Ping ...	
✓	bladecentre	10.66.100.1...	Blade Center	IBM	1XX	78C6916	Test Lab	UK/London ...		10:39, 30 M...	Full (All Port...	

1 - 37 of 37 | < > >|

Server: helix.entuity.local

Managed Assets 12 Discovered Assets Auto Discovery

### Asset Management

Manage Assets Show New Assets Only Show Not Managed Only Filter Table

**License Consumption**

Full: 24/200

Basic: 3/200

Associated: 97/200

Config Mgmt: 10/50

**Asset Summary**

44

- Manag... 31
- Not M... 1
- New 12

**Credential Status**

41

- OK 35
- Invalid 5
- Missing 1

Asset Name	IP Address	Asset Category	Discovery Pro...	Last Seen	Credential Sta...	Managed Since	Description	Location	Management ...	Management ...
10.44.2.107	10.44.2.107	Network Device	Matts Discovery	14:01, 30 Mar ...	Invalid				None	New
10.66.100.31	10.66.100.31	Network Device	Matts Discovery	14:01, 30 Mar ...	OK		Linux Coskuno...	Simulator	SNMP	Failed
10.66.100.32	10.66.100.32	Network Device	Matts Discovery	14:01, 30 Mar ...	OK		LGWVA	Simulator	SNMP	Failed
10.66.100.33	10.66.100.33	Network Device	Matts Discovery	14:01, 30 Mar ...	OK		Palo Alto Netw...	Simulator	SNMP	Failed
10.66.100.34	10.66.100.34	Network Device	Matts Discovery	14:01, 30 Mar ...	OK		NetScaler NS1...	Simulator	SNMP	Failed
aruba6000	10.66.100.189	Network Device	Matts Discovery	14:01, 30 Mar ...	OK	14:06, 30 Mar ...	ArubaOS (MOD...	MDF-B	SNMP	Full (All Ports)
asa5510-1	10.44.5.18	Network Device	Matts Discovery	14:01, 30 Mar ...	Invalid	11:00, 30 Mar ...			None	Basic (Ping Onl...

1 - 41 of 41

Server: helix.entuity.local

Managed Assets 12 Discovered Assets Auto Discovery

### Asset Management

Create Discovery Edit Discovery Start Discovery Stop Discovery Filter Table

**License Consumption**

Full: 24/200

Basic: 3/200

Associated: 97/200

Config Mgmt: 10/50

**Status Summary**

3

- Complete 2
- Running 0
- Never Ran 1
- Stopped 0

Status	Profile Name	Progress	Addresses	Schedule	Next Run	Last Started	Last Finished	Last Run Status	Automatically ...	Last Run Resu...
Never Ran	Default	0%						Never Ran	No	View Results
Complete	Matts Discovery	100%	192.168.99.2, ...			14:01, 30 Mar ...	14:02, 30 Mar ...	Success	No	View Results
Complete	Pat checking p...	100%	poseidon			12:25, 30 Mar ...	12:26, 30 Mar ...	Success	No	View Results

1 - 3 of 3

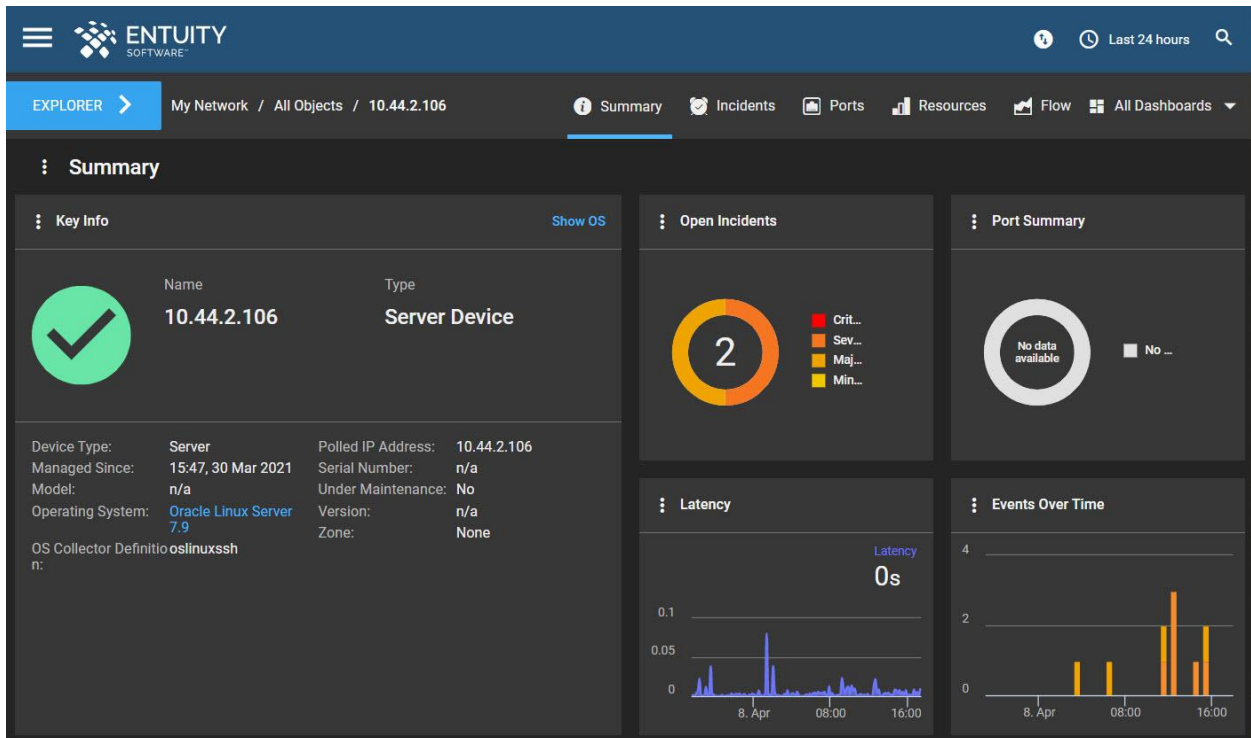
[Please see this section](#) for further information on asset management.

## Support for server devices

Addition of support for monitoring and reporting on server hardware (via SNMP or SSH polling), and server OS assets (via WinRM for Windows and SSH for Linux) and network adapters. Alongside existing support for Cisco UCS, server hardware monitoring is added for the following hardware platforms:

- Dell PowerEdge servers
- HP Proliant servers.

Addition of new Summary and Resources dashboards for server assets, and new incidents and events specific to the management of servers and operating systems.



[Please see this section](#) for further information on server monitoring.

# Support for storage devices

Addition of support for monitoring and reporting on storage devices, specifically for the following devices:

- EMC VNX, VNXe devices.
- Nimble devices.
- DataDomain devices.

Addition of new Summary and Resources dashboards for storage devices, and new incidents and events specific to the management of storage devices.

The screenshot displays the Entuity Software interface for a storage device. The top navigation bar includes the Entuity logo, a search icon, and a 'Last 24 hours' filter. The breadcrumb trail shows 'My Network / All Objects / 10.121.110.188'. The main dashboard is titled 'Summary' and contains several widgets:

- Key Info:** Shows the device name '10.121.110.188', vendor 'Nimble', and type 'Storage Device'. Below this, it lists device details: Device Type: Storage, Serial Number: AF-126832, HW Collector Definition: nimble, Under Maintenance: No, Version: 5.0.7.300-644174-opt, Managed Since: 11:31, 10 Feb 2021, Model: CS500, Zone: None, and Polled IP Address: 10.121.110.188.
- Open Incidents:** A circular gauge showing 1 incident. A legend indicates severity levels: Critical (red), Sev... (orange), and Maj... (yellow).
- Port Summary:** A circular gauge showing 6 ports, with a legend indicating 'unk...' (unknown).
- Latency:** A gauge showing latency in milliseconds (ms).
- Events Over Time:** A line graph showing event frequency over time, with a peak around 08:00 on 8. Apr.

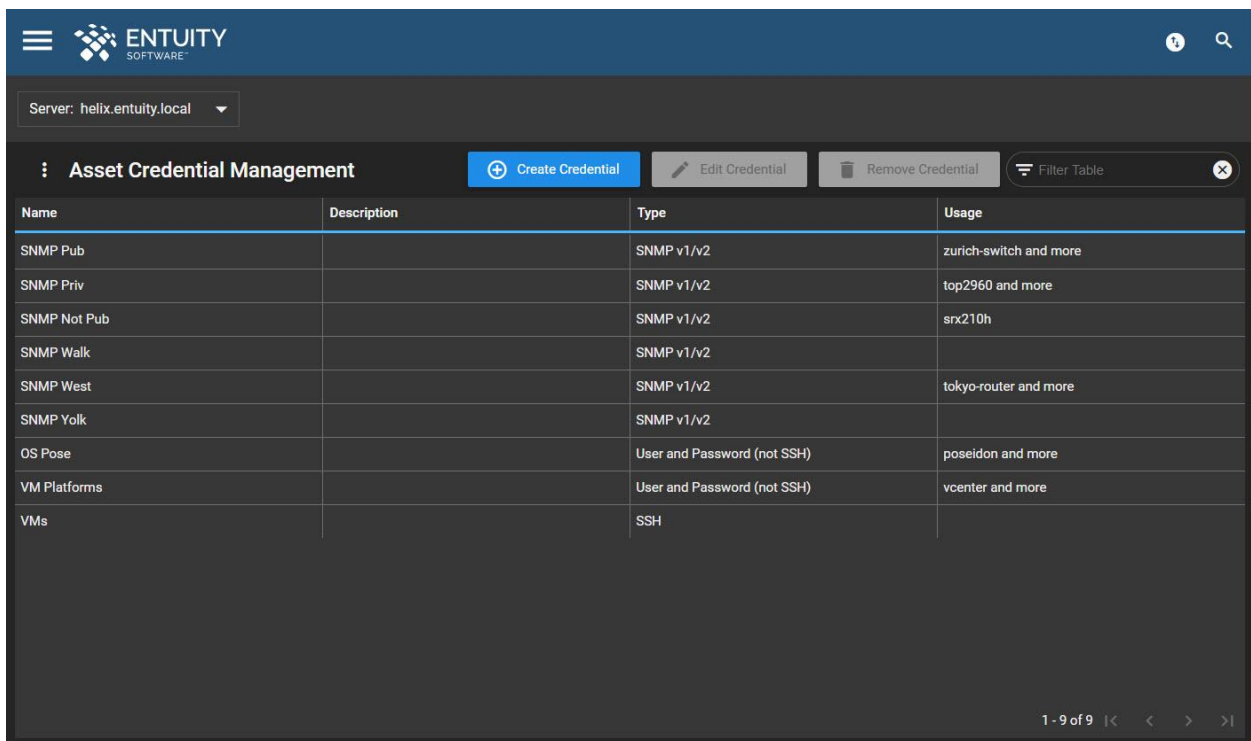
At the bottom, the 'Physical Disks' section contains a table with the following data:

Name	Vendor	Serial #	Part #	Firmware	Version	Size	Model	Rotational Speed	Extra Info
✓ Disk 1, Shelf 0	Nimble	P9H9DK4W		A1C4		2.7290 Tbytes	HUS724030ALS...	--	Port: 15, Shelf: 0
✓ Disk 2, Shelf 0	Nimble	P9HA9HWW		A1C4		2.7290 Tbytes	HUS724030ALS...	--	Port: 14, Shelf: 0

[Please see this section](#) for further information on storage device monitoring.

## Asset credential management

Addition of a new Asset Credential Management page to provide a central location from which users can manage common credential sets for multiple purposes. Each credential set is uniquely identified by name and credential type, and can be bulk-applied to multiple assets. Users can also manage credentials via the Entuity RESTful API.



Server: helix.entuity.local

**Asset Credential Management** [+ Create Credential](#) [Edit Credential](#) [Remove Credential](#) [Filter Table](#)

Name	Description	Type	Usage
SNMP Pub		SNMP v1/v2	zurich-switch and more
SNMP Priv		SNMP v1/v2	top2960 and more
SNMP Not Pub		SNMP v1/v2	srx210h
SNMP Walk		SNMP v1/v2	
SNMP West		SNMP v1/v2	tokyo-router and more
SNMP Volk		SNMP v1/v2	
OS Pose		User and Password (not SSH)	poseidon and more
VM Platforms		User and Password (not SSH)	vcenter and more
VMs		SSH	

1 - 9 of 9 |< < > >|

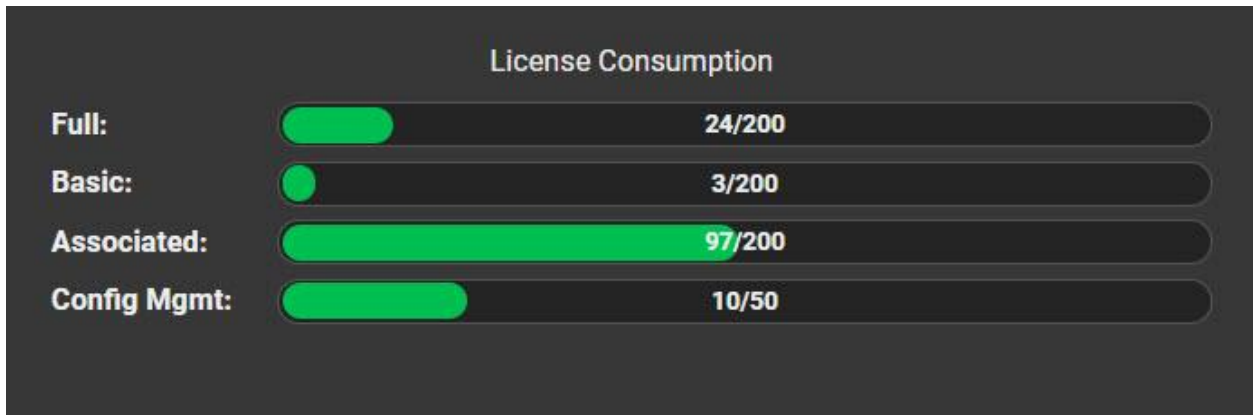
[Please see this article](#) for further information on credential management.

## Licensing

Updated licensing model with the following license types:

- Full Device - provides full polling of devices including performance metrics (streams) and port management.

- Basic Device - provides ping-only management of devices, and basic SNMP management (no streams or performance data and no port management).
- Associated Device - covers VM/SD/AP devices associated with a VM platform, Wireless Controllers, or other type of controller or software-defined platform. Users can pick and choose which associated assets to manage.
- Configuration Management Device - covers both Configuration Management and Configuration Monitoring, and is charged by device.



[Please see this section](#) for further information on licensing.

## Reporting styles

Addition of an option for users to create and edit their own reporting style templates so as to personalize the appearance of reports.

The screenshot shows the "Reporting Styles" management interface in Entuity Software. It features a table with columns for Template Name, Section Header Font Color, Section Header Background Color, Table Header Font Color, Table Header Background Color, and Logo. The table lists three styles: BMC, default, and legacy. The interface also includes buttons for "Edit Style" and "Create Style", and a "Filter Table" dropdown.

Template Name	Section Header Font Color	Section Header Background C...	Table Header Font Color	Table Header Background Color	Logo
BMC	#FFFFFF	#FE5000	#FFFFFF	#4AB6FF	BMC.png
default	#FFFFFF	#37A4EF	#FFFFFF	#37A4EF	default.png
legacy	#000000	#EFEFE2	#000000	#CCFF99	legacy.jpg

[Please see this article](#) for further information on reporting styles.



# Additional Changes in Entuity v19.0

## Dashboards

Improvement so that the context is retained when a user drills down from one dashboard to an object in another, rather than drilling down to the Summary dashboard for the new object.

## Dashlets

Fixed an issue that prevented users from using the 'Create SLA' button on the IP SLAs dashlet unless an IP SLA was selected from the table.

Change so that the cursor displays a pointer when hovered over the pencil edit icon in the Object Attributes dashlet, indicating that the icon can be clicked to open the 'Edit Attribute' form.

Change to the Pie Chart dashlet so that when a user changes the 'Group Objects of Type' selection in the Edit Dashlet form, the 'Group by Attribute' selection will be reset.

## Device Support

Added support to collect data from HP Insight Manager devices.

Update to webhook handling for Cisco Digital Network Architecture Center (DNAC) device types.

## Event Management System

Addition of a new 'Open For' metric to the Incident Details and Event Details forms. For incidents, this indicates the time since the incident was last opened. For events, this indicates the time since the event was first opened.

## Polling

Addition of a timeout of 180000ms to SNMP discovery and polling.

## Views

Fixed an issue whereby if a View on a remote server had a different owner to the View owner on the consolidation server, and the remote owner was not available on the consolidation server, the View was assigned a random owner on the remote server.

Fixed an issue whereby a View's location information incorrectly did not originate from the consolidation server.

Fixed an issue whereby Views could not be created or edited on a consolidation server if View filters differ between servers.

## Improvements and Fixes

Entuity v19.0 further includes the following improvements and fixes from the previously-published patch version of Entuity, which is ENA v18.0 P06. These improvements and fixes are also included in ENA v18.0 P07, which will be released shortly after Entuity v19.0.

Functional Area	Platform(s)	Description
BMC Remedy AR System Integration	All	Fixed an issue in the method of event forwarding to the BMC Remedy AR System integration that requires the Entuity Remedy process to be enabled, whereby the Remedy process would exit soon after starting up.
Configuration Monitoring	All	Fixed an issue that prevented users being able to create their own configuration retrieval tasks for objects belonging to a new type of manufacturer.
Dashboards	All	<p>Fixed an issue whereby dashboards would fail if their dashlets were configured to have their dashlet titles hidden and dashlet menu options not promoted to the main dashboard menu.</p> <p>Fixed an issue whereby Incident dashboards, SurePath dashboards, Service dashboards and the device Configuration Monitoring dashboard, the View SurePath incorrectly promoted dashlet menu options to the dashboard menu.</p> <p>Fixed an issue whereby the AP Antenna Summary dashboard, Aruba AP Antenna Summary dashboard and Trapeze AP Antenna Summary dashboards failed to render.</p> <p>Fixed an issue affecting Views with a single quote ' in the name, whereby clicking 'Show Open Incidents' on the context menu of a device within the View would not then navigate the user to the Incidents dashboard.</p>

		<p>Fixed an issue affecting Views with a single quote ' in the name, whereby clicking 'Show Open Incidents' in the context menu of a device in a View would not then navigate the user to the Incidents dashboard.</p>
Dashlets	All	<p>Fixed an issue whereby unmanaged ports can be temporarily missing from the Port Summary dashlet.</p> <p>UI improvements to the Key Info dashlet.</p> <p>Addition of a warning message when a user specifies a URL dashlet to refer to any dashboard.</p>
Device Support	All	<p>Addition of support for the following devices:</p> <ul style="list-style-type: none"> <li>● Virtual Access Router</li> <li>● Raritan KVM</li> <li>● Avaya Virtual Services Platform</li> <li>● Ingrian KeySecure</li> </ul> <p>Addition of support for discovery of the following attributes:</p> <ul style="list-style-type: none"> <li>● CDP topology between Cisco Nexus 7k and 5k switches.</li> <li>● Memory for Dell Connectrix switches.</li> <li>● Memory for stacked Cisco 3650 switches.</li> <li>● Fan and power supply for HP Aruba stacked switches.</li> <li>● Memory exceeding 4GB for Huawei CX600 series routers.</li> <li>● TCP and UDP connection rates for Checkpoint firewalls.</li> </ul> <p>Fixed an issue whereby memory was incorrectly reported on managed host devices that support UCD-SNMP-MIB.</p> <p>Fixed an issue whereby LLDP topology discovery on Extreme devices caused high memory usage.</p> <p>Fixed an issue whereby temperature sensor status values were incorrectly reported on devices that support CISCO-ENVMON-MIB.</p>

		<p>Fixed an issue whereby Reboot Detected events were incorrectly raised on certain Checkpoint firewall devices.</p> <p>Added support to collect data from HP Insight Manager devices.</p> <p>Fixed an issue whereby some long values retrieved from Cisco Viptela devices caused an SQL error.</p>
Drop Box	All	Fixed an issue whereby adding attributes to the Drop Box from the Object Attributes dashlet resulted in the attributes having the wrong object type, i.e. an attribute for a device would be added as an attribute for a View.
Event Management System	All	Addition of a 255-character limit to the 'Reason' field when creating an event suppression.
Flow	All	Fixed an issue whereby changes to flow or flow management ports made when running configure were not saved to entity.cfg.
General Performance Improvements	All	General performance improvements.
General UI Improvements	All	General UI improvements.
Maps	All	Fixed an issue whereby the Open Map in New Tab functionality did not work.
Reporting	All	<p>Fixed an issue whereby the Service Availability report could produce incorrect figures accompanied by missing 'Status' column information.</p> <p>Fixed an issue whereby the IP SLA Details report did not include all possible results.</p> <p>Fixed an issue whereby the Device Uptime report could incorrectly report periods of down time</p>

		<p>where data is polled faster than the specified frequency.</p> <p>Improvement to CSV export of reports.</p> <p>Fixed an issue whereby the Polling Diagnostic report would return incorrect results when the stream job duration was very close to the polling interval time.</p> <p>Fixed an issue whereby certain custom reports did not run correctly when two or more servers were selected.</p> <p>Fixed an issue preventing objects being dragged from the dropbox or another window into a time series chart report.</p>
RESTful API	All	<p>Addition of more efficient RESTful API calls to list the objects in a View.</p> <p>Fixed an issue whereby an error would be thrown when calling a device inventory via RESTful API in XML.</p> <p>Improvement so that error messages that might arise when removing devices via RESTful API are more user-friendly.</p>
Security Updates	All	<p>Fix to protect the Map dashboard, remote terminal page and all dashlets from cross-site scripting vulnerability.</p> <p>Fixed a security issue whereby tomcat default error messages were still sometimes displayed.</p> <p>Fix to protect VM platform management from SQL injection attack.</p> <p>General security improvements.</p>
Virtualization	All	<p>Fixed issues causing exceptions to be thrown when polling VMWare.</p> <p>Fixed an issue whereby the 'Powered On/Off'</p>

		state for virtual machines was incorrectly flapping for Hyper-V virtual machines that are duplicated across hypervisors in failover systems.
--	--	--

## Notes

Please refer to the [Entuity Help Center](#) for help and information on functionality added in this release.

Entuity recommends that all servers in a multi-server configuration run the same patch version.