



January 17th 2020



ENA v18.0 Release Notification

Technical Bulletin January 17, 2020

We are delighted to announce that the latest version of **Entuity Network Analytics**, to be known as **ENA v18.0**, is now available for customer use. Details of the benefits to be gained from this new release are set out below.

ENA v18.0 New Release Details

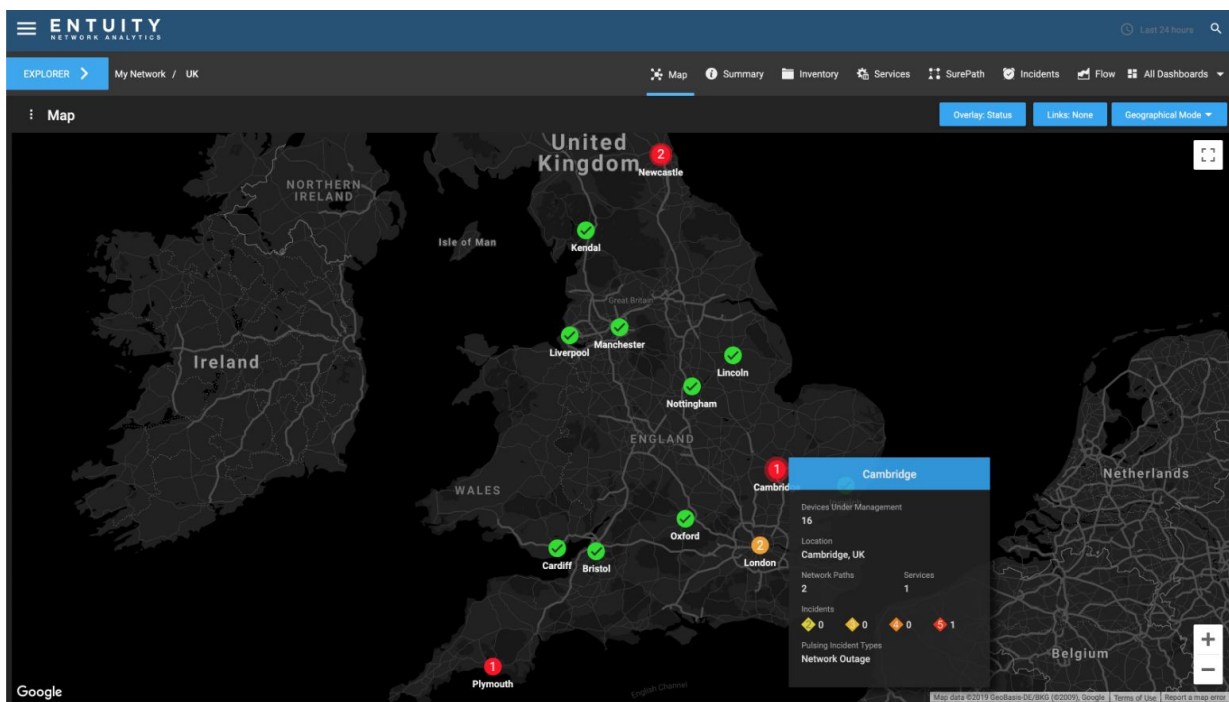
The following key additions and changes have been made to ENA v18.0:

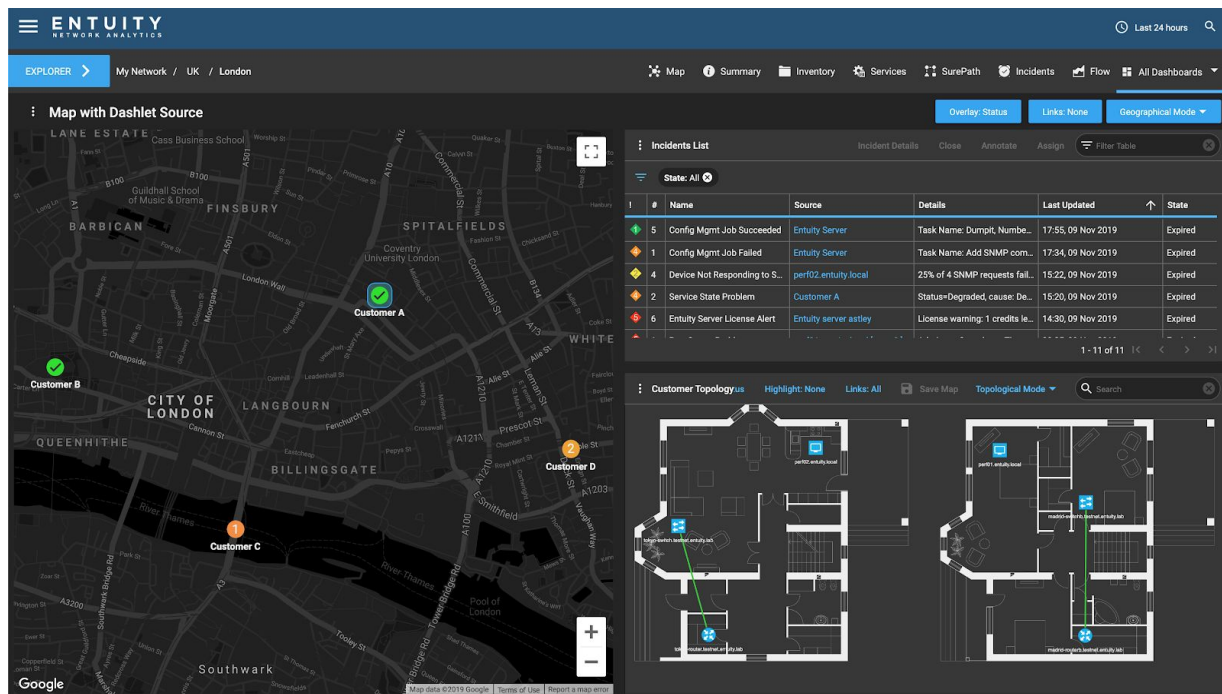
- Geographical Map
- Topological Map
- SurePath
- Maintenance Mode
- Trends
- Cisco Viptela

Geographical Map

Addition of a new Google Maps integration so that users can set geographical locations to Views, which will then be automatically plotted onto a Google Map. Users can switch between Geographical and Topological Modes as they want.

In Geographical Mode, each View marker will display customizable levels of incident information, and users can hover over the View marker for further at-a-glance details about the View.

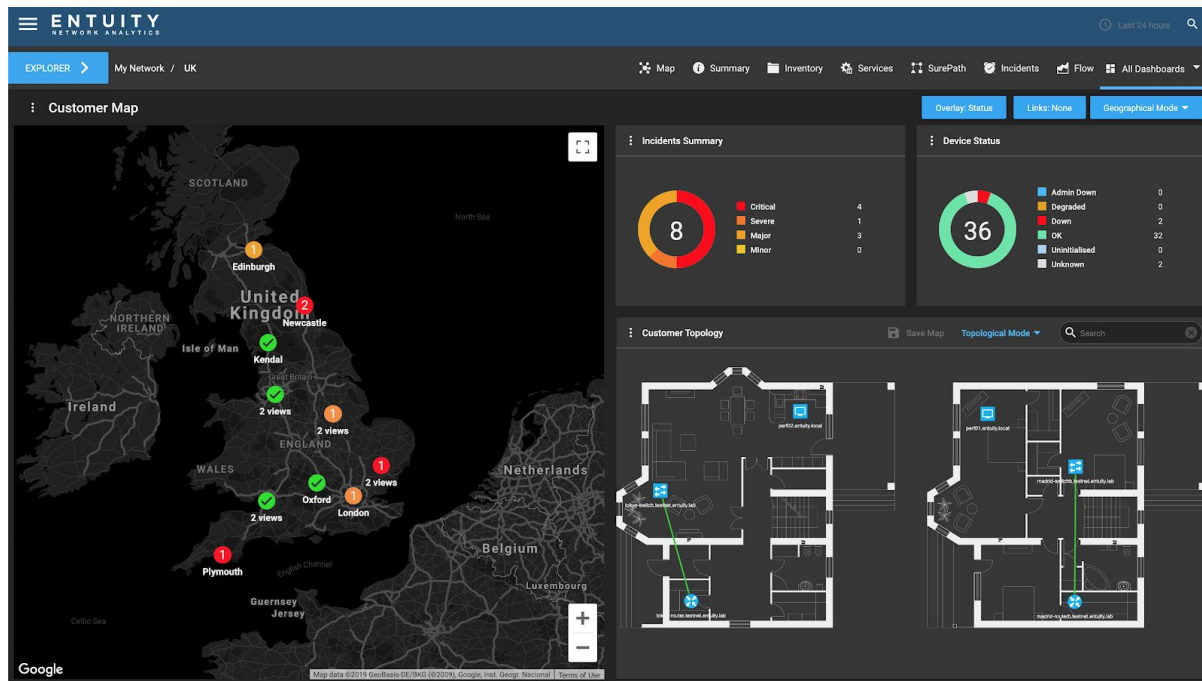
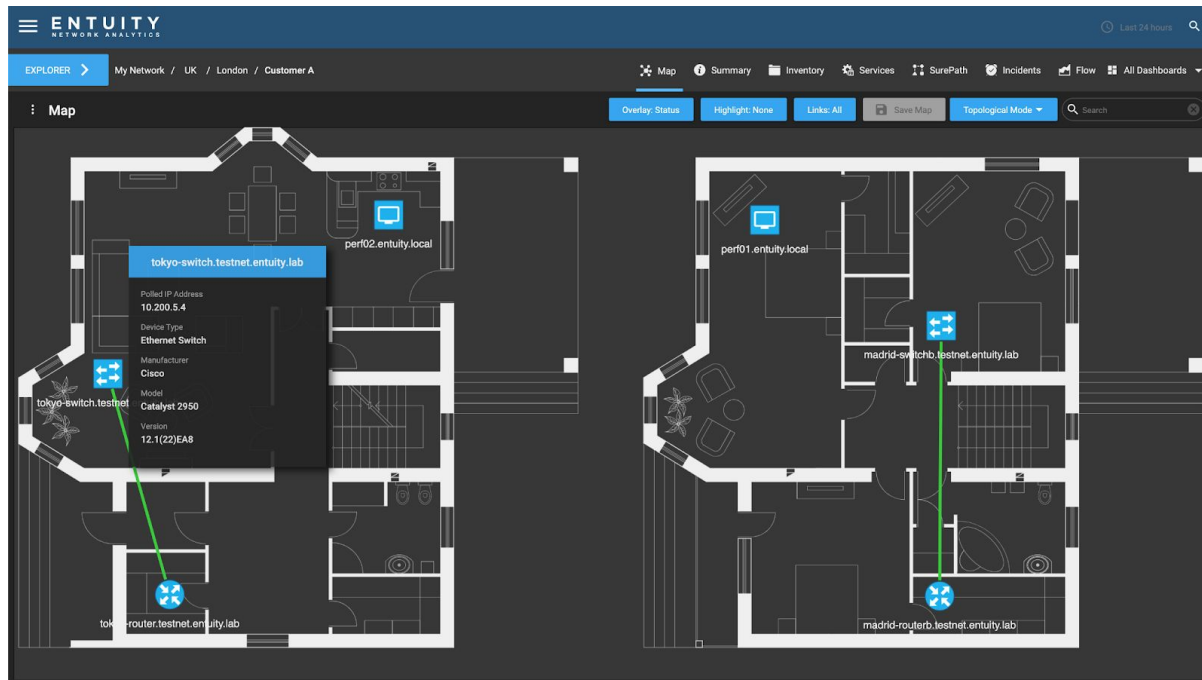




[Please see these articles](#) for further information on the Geographical Map.

Topological Map

Addition of new customizable labels on the Topological Map that can display any attribute that is not a time-series metric. Users can display up to 3 fields of information on the map itself (under the object/device), and up to 10 fields of information on a tooltip that is displayed when hovering over the object/device.



[Please see this article](#) for further information on the Topological Map.

SurePath

SurePath has been completely revised with the introduction of agent-based path discovery that allows for troubleshooting of public as well as private networks.

ENA v18.0 uses Entuity's proprietary SurePath technology, which now employs tcptraceroute. tcptraceroute creates a tcp connection to the endpoint destination and sends tcp packets to more closely mimic the behavior of applications and therefore the user experience.



Users can use Required and Blacklist functionality to specify which nodes must and must not appear in a path, with events raised for non-compliance.



[Please see these articles](#) for more information on SurePath.

Maintenance Mode

Addition of maintenance window functionality whereby users can set maintenance schedules for Views and devices, so that maintenance periods are reflected in reports. Users can suppress events on devices under maintenance - data is still collected under maintenance mode, but the maintenance section of time is simply ignored for reporting purposes.

ENTUITY NETWORK ANALYTICS							
Maintenance Mode							
Name	Status	Devices	Starts At	Ends At	Suppress Eve...	Schedule	Master Server
Quarterly maintenance		6	15:00, 26 Dec 2019		Yes	All day, on Thursdays, Saturdays; during Mar...	
Nightly maintenance		9	18:00, 01 Jul 2019		Yes	From 18:00 to 24:00, every day, every month	
Office closure	Active	28	08:40, 05 Nov 2019	12:30, 06 Nov 2019	Yes	All day, every day, every month	

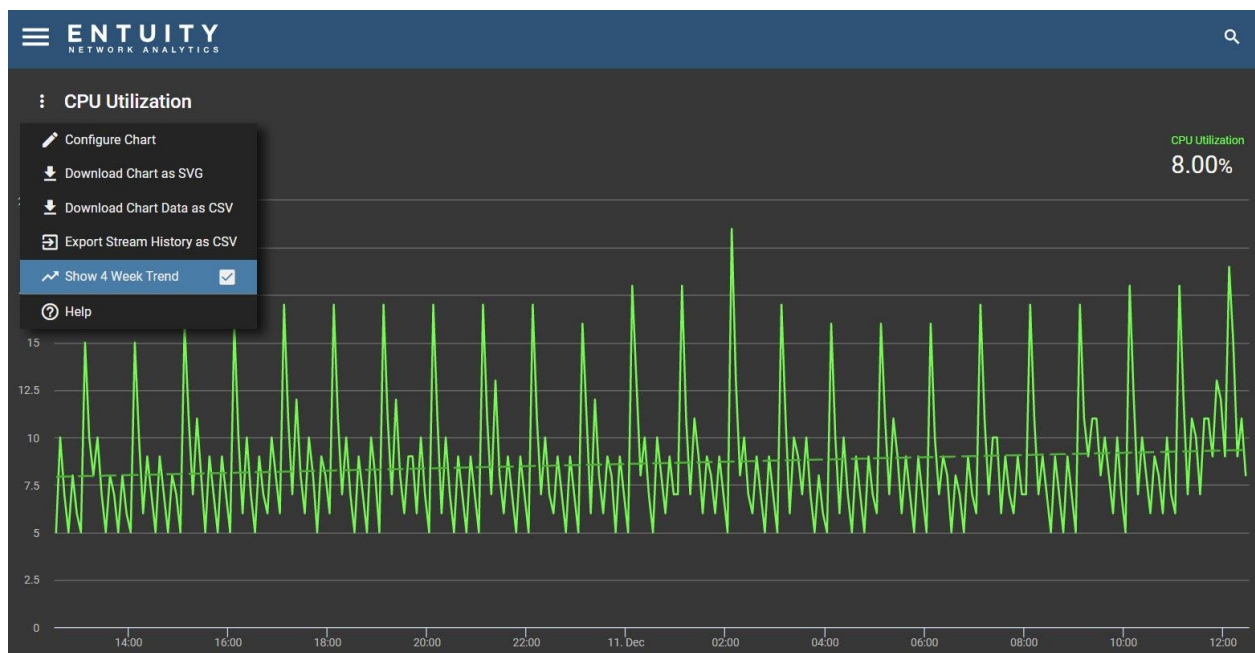
Delete Maintenance
Duplicate Maintenance
Edit/View Maintenance
Split Maintenance

[Please see these articles](#) for further information on Maintenance Mode.

Trends

Added functionality so that users can set a 4 week trend to any time series chart (both system and custom) across ENA at run time. This setting uses the last 4 weeks' worth of data to calculate the trend, and is persistent on that chart until the user removes it.

The existing trend functionality at design time has been extended so that the user can set a trend based on 2, 4, 8 or 16 weeks' worth of data.



[Please see this article](#) for further help and information on trends.

Cisco Viptela

Addition of support for Cisco Viptela (SD-WAN) alarms. ENA v18.0 introduces the following:

- new device type - vManage Cloud Controller (with details of associated vEdge devices and alarms).
- new Summary dashboards for vManage Cloud Controller and vEdge.

- New ENA events onto which Viptela alarms are mapped.

[Please see this article](#) for further information on Cisco Viptela support.

Additional Changes

Account Management

Addition of an option to restrict the servers that members of a user group can see.

Device Support

Enhanced support for Cisco Nexus 7700 devices, with better IP and MAC schemes, as well as extended support for Meraki router and switch devices.

Addition of support for webhooks from Meraki Cloud Controller devices, so that they can send alerts via the webhook that are then turned into ENA events.

Addition of support for Viptela alarm handling so that the virtualization process will poll for Viptela alarm data using RESTful API calls and generate Viptela events and incidents. Inventory information on Viptela devices managed by the vManage cloud controller device will be viewable within the ENA UI.

Event Management System

Addition of an option to set customizable sounds that play upon the raising of an event or incident in the Events dashboard and Incidents dashboard.

Licensing

Addition of an option so that it is now possible to update license files on the License Health page, without needing to restart ENA.

Improvements and Fixes

ENA v18.0 further includes the following improvements and fixes from the previously-published patch version of ENA, which is ENA v17.0 P07. These improvements and fixes are also included in ENA v17.0 P08, which is released concurrently with ENA v18.0.

Functional Area	Platform(s)	Description
Auto Discovery	All	<p>Addition of an option, 'Allow Duplicate IP Addresses'.</p> <p>Change to Auto Discovery so that importing a device file will no longer run Auto Discovery again, but instead display the results directly.</p> <p>Change so that Auto Discovery profiles with names containing URL special characters can now be referenced in the RESTful API, using URL with UTF-8 encoding.</p>
BMC TrueSight Operations Management Presentation Server Integration	All	<p>Fixed an issue whereby the 'Open in Entuity' link on the TSOM object summary page would redirect to a broken dashboard due to an invalid View path.</p> <p>Fixed an issue whereby users could not sort columns in the TopN dashboard.</p>
Configuration Management	All	<p>Fixed an issue affecting upgraded installations whereby the table on the Configuration Management page would not update configuration management or monitor task</p>

		status from 'Dispatching'.
Dashboards	All	<p>Fixed an issue affecting the Virtualization dashboard whereby selections in the Virtualization Platform (VM Platforms Summary) dashlet that then populate the Virtual Machines (VM Summary) dashlet, together with any filters being applied to the Virtual Machines (VM Summary) dashlet, were not retained after a table refresh.</p> <p>Fixed an issue affecting the creation of new dashboards, whereby if you specified the dashboard's 'Applicable to' context field to an option that was not one of the five shortlisted options, and then added a chart or table dashlet, the 'Applicable to' context field for those dashlets would not default to the selection made at the dashboard level.</p> <p>Addition of the System Health dashlet to the Summary dashboard for Cisco ACI SDN controllers.</p>
Dashlets	All	<p>Fixed an issue that affected ordering the View Contents dashlet by type. Views, services and network paths appeared at the bottom, but after the fix now appear in the correct order: 1 Views, 2 services, 3 network paths, 4 others (e.g. devices).</p> <p>Addition of a location attribute to the Key Info dashlet for SNMP devices. This is an SNMP property based on the discovered syslocation, but users can also add a custom location.</p> <p>Fixed an issue affecting Chart dashlets displaying an attribute series, whereby dragging another attribute series from another browser tab/window into the chart would not refresh the chart.</p> <p>Fixed an issue affecting the Events List dashlet and Incidents List dashlet, whereby if the Dashboard Timeframe setting was set to a unit that was not in seconds, then the table filter in</p>

		<p>those two dashlets would display the chosen timeframe in seconds (e.g. '1 Hour' would display as '3600 Seconds'). The unit is now displayed correctly.</p> <p>Fixed an issue affecting the Events List and Incidents List dashlets, whereby if the Event Timeframe or Incident Timeframe was set to 'Last Closed Time' then the Dashboard Timeframe would be incorrect or not exist.</p> <p>Fixed an issue affecting the Events List and Incidents List dashlets, whereby if the Dashboard Timeframe was set to 'Any', then the filter for that timeframe would not be updated.</p> <p>Change so that stream/ticker period options are no longer hidden in Chart Settings when a stream/ticker has not been selected for a Chart dashlet. These options are now visible but disabled, with help text explaining why.</p> <p>Fixed an issue affecting the View Contents dashlet, whereby a user with read permissions on a View that is nested more than one level down within parent Views that they do not have read permissions for, would not be able to navigate more than one level down. This has been fixed so that users can navigate through Views they do not have read permissions on, so that they can access the View for which they do have read permission.</p> <p>Addition of a 'Physical/Virtual' column to the Port Summary dashlet to denote if the port is physical or virtual.</p> <p>Fixed an issue affecting the opening of chart dashlets in a new tab, whereby the Overflow Menu for the new tab's chart would still have an 'Open in New Tab' option. This option has now been removed.</p> <p>Addition of new available columns to the View</p>
--	--	---

		Contents dashlet.
Device Attributes	All	<p>Fixed an issue whereby the Device Reachable Time attribute value was not converted correctly from seconds to a user-friendly format.</p> <p>Fixed an issue whereby the Last Operation Time attribute for IP SLA attributes was displaying as a raw value, rather than in a user-friendly format.</p>
Device Inventory	All	Fixed an issue affecting addition of devices, whereby if a list of duplicate IP addresses resulted in an error description longer than 256 characters then the device would not appear in the Device Inventory table.
Device Management	All	<p>Addition of a Management Port Only option for device management. This appears as 'Full (Mgmt Port Only)' in the Management Level options.</p> <p>Improved virtual port categorization.</p>
Event Management System	All	<p>Addition of an option in entuity.cfg to make it mandatory to complete the Reason field when creating a new event suppression on an event.</p> <p>Change to the process of creating and editing event rules, so that it is now possible to reset and save the Rule Condition to 'None' after the rule has already been saved.</p> <p>Addition of an 'extraVarbinds' parameter to the Send SNMP Trap EMS action. This can be set to a map of values with OIDs and indices, and these extra values will be appended to the end of the forwarded SNMP Trap data.</p> <p>Fixed an issue whereby system events relating to the Entuity server were appearing in all Views. Now, system events will only appear in the All Objects View and any View that includes it (e.g. My Network View for admins).</p> <p>Fixed an issue affecting the Rules tab on the Event Administration page, whereby a user could</p>

		<p>not drag rules from one processing stage to another. Users can now drag rules between processing stages.</p> <p>Fixed an issue with the date-time picker on the EventSuppressions form whereby it was either prevented from opening or opened with an error about the validity of the current date.</p>
General Performance Improvements	All	General stability improvements.
General UI/UX Improvements	All	<p>Fixed an issue affecting Views with an ampersand (&) in its name, whereby charts that are opened from that View or a device in that View would display incorrect or missing data.</p> <p>Reduced padding around dashlets.</p> <p>Fixed an issue mostly affecting the Events List dashlet, Incidents List dashlet and the Audit Log, whereby invalid table data might be presented if the user repeatedly reloaded tables.</p> <p>Fixed an issue whereby selecting multiple items in a table that has been filtered and then right-clicking to open the context menu would cause the selections to be removed.</p> <p>Fixed an issue affecting 'In Between' date ranges, whereby the 'To' date would be automatically set to equal or after the 'From' date. Now, the 'To' date will no longer change because of any changes made to the 'From' date.</p> <p>Fixed an issue affecting the filter form when tables are filtered, whereby fields for single- or multi-choice inputs that had no options would throw an error, e.g. if an events table is filtered so that there are no events, then the 'Servers' field would throw an error even though there are no available servers to select. Now, the fields for single- or multi-choice inputs that have no options will simply be disabled.</p>

Polling	All	Introduction of separate and faster polling (every 5 minutes) of Meraki Cloud Management Platforms for Organization and Device Status data, combined with faster Meraki Device Status stream updates to keep Meraki Device objects more up to date.
Remedy Single Sign On (RSSO)	All	Fixed an issue affecting RSSO whereby once a user whose session was timed out has signed back in again, they would sometimes be redirected to an invalid URL or the logout page.
Remote Terminal	All	Enhancement so that the pre-login banner for connecting to a device using SSH2 is now displayed as a pop-up alert.
Reporting	All	<p>Addition of the option to run reports in any specified time zone, not just the (consolidation) server's time zone. If a time zone is specified, the timestamps in the report will reflect that time zone.</p> <p>Fixed an issue affecting the TopN Port Error Rates report, whereby the report would not run correctly against a View that has unicode characters in its name, or a View that exists on one server in a multi-server environment but not on others.</p> <p>Fixed an issue that prevented the Flow Analysis report from running.</p> <p>Addition of an option to include virtual ports in the Port Bandwidth Capacity Planning Trend report.</p> <p>Fixed an issue affecting the creation of Multi chart/table reports, whereby the 'Organize Layout' button did not work using Chrome or IE.</p> <p>Fixed an issue affecting dragging attributes from incident streams into a report builder from another tab would throw an error.</p> <p>Fixed an issue that prevented the Spanning Tree</p>

		Device Config report from running.
SDN Controller	All	Improvement so that Cisco ACI faults will now be mapped to ENA events and incidents.
Search	All	Fixed an issue affecting searches for objects with the Connected Host type. If a MAC address, IP address or host name is given as the search criteria, only a port result was being returned for successful searches. After this fix, the host device is also shown in a separate row on the search results page.
Services	All	Fixed an issue whereby if a service was defined on the central server behind a firewall and had components on a remote server, then the status of those remote components did not update reliably. Such components now do update correctly.
Thresholds	All	Change so that attributes can be assigned a negative value if their configured minimum value is below 0 (zero).
Topological Map	All	<p>Fixed an issue affecting the topological map in multi-server configurations when users select only some servers, whereby the progress bar at the bottom of the map would become stuck at a percentage and not disappear because it expected data from all servers. The progress bar now fills correctly and disappears upon loading of data.</p> <p>Fixed an issue that removed device incident severity information from the topological map.</p>
User Account Management	All	<p>Change so that non-admin users can now enable or disable port status events via the right-click context menu.</p> <p>Addition of a user group tool permission to hide the top-level 'Configuration Management' option in the from the right-click context menu.</p> <p>Change so that the Event Administration tool</p>

		<p>permission is no longer required for a user to access the Event Notifications page and therefore create and edit event notifications.</p> <p>Addition of a user group tool permission to allow non-admin users access to ICMP Monitor settings.</p>
--	--	--

Notes

Please refer to the [Knowledge Base](#) on the ENA Help Center for help and information on functionality added in this release.

Entuity recommends that all servers in a multi-server configuration run the same patch version.